

**6050A-04**

**S E R V I C E                      N O T E**

---

Supersedes:  
NONE

**6050A Multiple Load Mainframe**

**Serial Numbers: 2908A-00101/05972 & US37140101/US99999999**

**Defective Insulator shield P/N 06050-20003**

**Parts Required:**

<b>P/N</b>	<b>Description</b>	<b>Qty.</b>
06050-20003	Insulator Shield	1

**ADMINISTRATIVE INFORMATION**

SERVICE NOTE CLASSIFICATION:

**INFORMATION ONLY**

AUTHOR: CP    PRODUCT LINE: SP

ADDITIONAL INFORMATION:

© AGILENT TECHNOLOGIES, INC. 2007  
PRINTED IN U.S.A.



June 29, 2007

**Situation:**

The Insulator used in the 6050A p/n 06050-20003 over time will begin to bow. Depending on the operating environment that the 6050A is used in the bowing of the insulator may cause the insulator to push into the exposed screws and component leads of the load module circuit board assembly in slot 1 of the 6050A mainframe.

This situation is rare and will not affect the entire customer install base. The conditions required to cause the problem to occur will take years to occur if it happens at all. The 6050A is currently out of support. The five year support life ended 03/01/2007.

To satisfy our customers Agilent will continue to support the insulator p/n 06050-20003 until 03/01/2010.

This additional support period should be an adequate time frame to support customers reporting defective 6050A's having defective insulator. The 6050A was introduced in 03/09/1989. During the period that the 6050A was in production this defect was not reported as a problem.

To satisfy our customers we will continue to support the insulator.

**Solution/Action:**

There is a kit currently available from SPO, Agilent (Support Part Origination).

This part can be obtained from SPO or the Support Engineer. See additional details below

The drawing below is the instructions that comes with the insulator p/n 06050-20003. The drawing has been included as an FYI.

When the insulator is replaced there is no calibration required.

To date any reported insulator that came in contact with the printed circuit assembly of the load module in slot 1 did NOT fail electrically.

06050-20003 Replacement Shield Kit

Remove Red Spacer

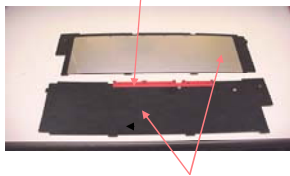


Figure 1 shows a Defective panel, both sides of the panel are shown. The Red spacer must be removed and reused. This procedure is shown in Figures 2, 3 & 4.

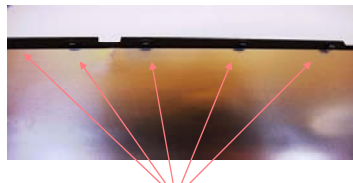


Figure 2 To remove the 5 rivets push the pin out or cut the rivet. Replacement rivets are included with this kit. The Red Spacer can now be removed for use in Figures 3 & 4 shown below



Figure 4 Completed replacement panel P/N 06050-20003. Now Ready for use in the instrument.

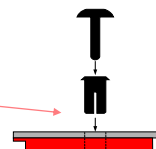


Figure 3 Show how the Red Spacer & the 5 rivets are inserted on replacement panel

**NOTE**

The new design shown in figure 4 above is form fit and function compatible. The middle layer of this Insulator will do the shielding required for EMI performance.

Due to the printed circuit board thickness it will be impossible for a short to occur.

For part requests see the contact information below.

**[Test & Measurement Find-a-Part](#)**

Part Details: 06050-20003

<b>Part Number:</b>	06050-20003
<b>Description:</b>	Mod and Ser Nbr Reqd INSULATOR
<b>Item Status:</b>	Limited Supply - Contact Agilent
<b>Item Type:</b>	Agilent Qualified Part

**[Contact Us](#) | [Email Parts Identification Team](#) | [FAQs](#)**

Carl Panetta  
 Product Support Engineer  
 Marketing Department for Power Products  
 System Products Division (SPD)

Agilent Technologies  
 550 Clark Drive, Suite 101  
 Budd Lake, New Jersey USA 07828-4301

phone: 1-973-448-7177 or t-448-7177  
 fax: 1-973-448-7257 or t-448-7257  
 email [carl\\_panetta@agilent.com](mailto:carl_panetta@agilent.com)